

Christie Lane Industries February 19th Update

And now-- for John's usual excuses & apologies:

by John Schwartz

I don't know what it looks like from the outside-- but to us inside CLI it sure feels like everything is happening all at once. Holly, Swick & I are in the middle of the 2nd round of new CLI position interviews for a bunch of Integrated Day (Community & shop-based non-vocational services) staff positions. Our plan is to post the CLI workshop vocational positions by March 1st. The 16 West Main Street studio project is moving ahead full steam (see pictures at bottom of the page). We've purchased a new Nissan NPV that can carry at least 12 people and tow a small village. It's pretty cool. We're also working on terms to expand our vehicle fleet even more in March. I joke that our strategy is to blow up one bridge at a time. Apparently I've got a "Force 10 from Navarone" thing. We know where we need to go and the directions we need to follow to get there, but the details can be overwhelming if you think about them all at once.

Please ask questions if something is frustrating or seems confusing or you have specific concerns or whatever. We are trying to make this transition process as transparent as possible.

Thanks!

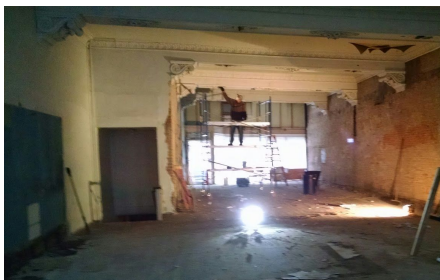
NEW CLI VAN



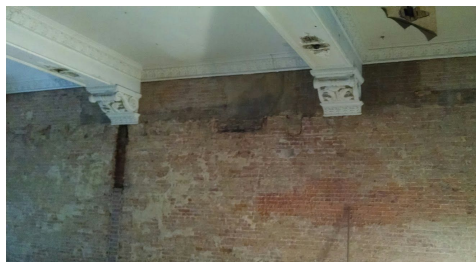
We are itching for a road trip -- or for the opportunity to move someone's house 2 inches to the left.



16 West Main Street Project Underway!



Helmstetter Home Inc. has completed demolition of the former Crider Jewelry store and the space is quickly transforming into the new accessible CLI studio space that we've been planning for more than 9 months. CLI gathered quotes late last fall. We are excited to work with Helmstetter for the general construction, Great Lakes Electric for the electrical, Hartland Mechanical for HVAC & Mike Hohler for plumbing.



SHOP TALK by Jen Swicker

Shop business has picked up with plenty of Buckets from Berry Plastics and 2 new jobs have graced us with their presence this week, thanks to Borgers and Americraft.

We continue to Thank Americraft, American Colors, Autogate, Berry Plastics, Borgers, NORWECO, Humanetics and Bores Mfg. for keeping us busy. We have another new job in the works and we continue our search for finding other businesses as well.

Our Shop is busy because we continue to provide our customers with quality work at a fair price. Our success is because all of you work so hard. Thank you to all CLI Employees for working hard and keeping it fun to come to work every day. Your hard work is much appreciated!

How about your Christie Lane BEARS Basketball team? They finished up their regular season play on Thursday, February 11th with a record of 8 Wins and 10 Losses and headed into Tournament play on Thursday, February 18th vs. The Morrow County Cougars. The BEARS dominated the Cougars downing them 51-37. Leading the way for the BEARS was Brittany Null with 16 points, Matt Lieber added 15 points, Mark Straka tossed in 11 points, Albert Greenlief chipped in 5 points and Scott Gremmer and Brian Ward collected 2 each to round out the scoring for the BEARS. The BEARS move on to the Area 5 Championship game on Saturday, February 20th where they will face Wyandot County Indians, Game Time: 12:15 pm. The game will be played in Tiffin at the Opportunity Center. Please plan to come out to get behind your BEARS and cheer them onto a Victory! GO BEARS!

Getting Out and About by Holly Binkley



For the past several months Christie Lane Industries has been operating a green lunchbox service. The goal is that the packaging of each box is earthy-friendly and biodegradable. We offer a variety a breads and wraps, fillings and toppings for sandwiches. Lunches also include chips or pretzels, a fruit, pickle, cookie and a drink. Delivery is also available if needed by the customer. Rhonda White from the Workshop has been heading up these efforts and has done a great job at preparing tasty and beautiful lunches. Rhonda has several sidekicks who have been helping her with the shopping, preparing and delivery work. Thus far we have only done catering for small to medium sized groups

within the community. We hope to continue to expand upon our services.

CHECK OUT WWW.CHRISTIELANE.COM !
